

BLUE BIRD

School
Series



COMPOSITION BOOK

No. 553

Name

W. Edward Anderson


Hominy, Oklahoma Grade


Name	Age	Teacher
Mildred Andrews,	6 years,	Mrs. H. B. Newman,

have
 some things I learned in music.
 musical staff is made up of 5 lines
 and 4 spaces.

We're sure we've seen these staffs before
 The lines are five, the spaces four.
 We're very glad there are no more,
 For now it is so easy.

A staff is divided into 2 clefs.
 Treble clef and Bass clef.

Sign of treble clef is 

Sign of bass clef is 

e-g-b-d-f are the lines on the
 treble clef, on the treble clef.

e-g-a-c-f are the lines on the treble clef 2nd
 end.

Melody

e-g-b-b-a-c-f-e-g-g-f-a-a

e-f-g-e-f 2nd end.

7 the finger exercise

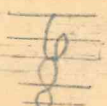
Hurry to your places

5 men in a line Oh what happy
faces while we beat the time

1 man b. bin up - 1 man b. bin
down Pointer do the same tall man

see what you can do Ring man's
rather large & little man up

5 little man down - All are in the
game.

The name of my first piece is
Lullaby, By G. Martin. It is written
in the key of C, And played in  time.

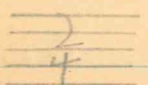
a Flat lowers a tone one half step.
A Sharp raises a tone one half step.
Legato means connected or walking tone.
Staccato disconnected or jumping tone.
A dot after a note increases the value
of that note one half - like $\frac{3}{4} p = p \dot{p}$

What is a chord?

together

A chord is when two or more notes are played \wedge
and make harmony.

C scale, thumb in right hand come on C and F.
For left C and G.

The name of my second piece is Sing Robin, By Geo.
L. Spaulding. It is written in the key of F or key
of 1 flat, time 

De
F a

F a

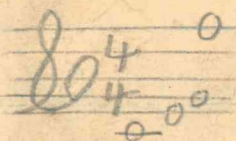
F a
d-

I
dis
in
ke
dr

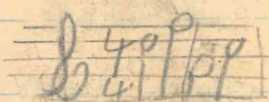
a-
of
the
sp
dis

Now you noticed how the lines keep these spaces between,
Now the spaces in these places And the lines are even,

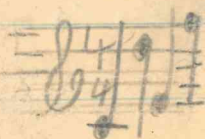
Describe whole, half, and quarter notes. -
Four whole notes - Middle c - e - f - g -



Four half notes - d - f - a - third space c



Four quarter notes Middle c
d - e - f



The keyboard is composed of seven different keys or letters a - b - c - d - e - f - g -
In order to become real well acquainted with keys of the piano my teacher gave me key drills such as

c - e - a - f - a - g - and so on. Another kind of key drill is this - what note is on the first line - 5th line - 3rd space - and any of the different positions.

$\frac{4}{4}$ = top figure means how many beats to a measure bottom figure shows what kind of notes receive one beat.

A scale is a succession of eight tones consisting of steps and half steps the half steps come between 3 and 4 and 7 and 8.

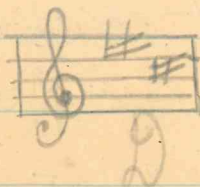
The first scale is C scale and the ~~steps and~~ half steps come on 3 & 4 and 7 & 8 without the use of any sharps or flats.



My second scale is G. It has one sharp which is F. sharp



My third scale is D. It has two sharps which are F & C.



My second piece is "Sing Robin Sing"

By Geo. L. Spaulding. It is written in the key of F
and played in $\frac{2}{4}$ time

My third piece is "Ripples" By Paul L. Ross.

It is written in the key of F and played in $\frac{3}{4}$
time.

Allegro means airy, fast.

Andante, slow movement.

Andantino, slow-

Allegretto, fast.

My fourth piece is "The Teddy Bears
Coming from school" by R. G. Grady.

It is written in the key of G and played in
 $\frac{2}{4}$ time.

4

I have finished the book, "Little Pieces for
Little People" by Lena Wheeler Chambers,
which I took with; "The Rhyme Road to
Music Land" by Fannie Church Parson
s, Book no. 1.

My fifth piece is "Sunrise," by R. G. Grady. It is written in the key of G and played in $\frac{4}{8}$ time.

I am taking "Home Study Book" by Crosby Adams.

Am taking the following piece for my first recital work:-

Sunrise by Grady and Four-part Melody By Von Weber

My first recital, at which I played nicely and made no mistakes.

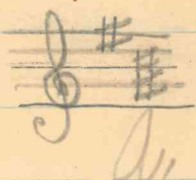
Piano Recital	
Mrs. H. B. Newman presented her pupils in piano in the following program last Saturday afternoon:	
Ring Sweet Bell	Hudson
Bye Lo Bye	Hudson
Vance Barlow	
Try Again	Lena W. Chambers
Over and Over	Lena W. Chambers
Ruth Barlow	
Jack and Jill	Lena W. Chambers
Tug of War	Lena W. Chambers
Mary Belle Franks	
Two Short Pieces	Lena Chambers
Paul Barlow	
Dools Waltz	Fishee
Donna Wheeler	
Nocturne	Martin
Ironica Haines	
Church Tower Chant	Rolfe
Maudie Woodward	
Dolls March	Fishee
Glenna Mae Franks	
Birthday Party Waltz	Martin
Louise Barlow	
Sunrise	Grady
Mildred Andrews	
The Boatman's Tune, Duet	Adams
Glenna Mae Franks, Louise Barlow	
Reading.	
Reading—By Louise Barlow.	
Hymn	Von Weber
Mildred Andrews	
America.	

April - 7 - 1923.

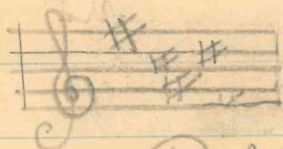
Had for sight reading. "Sweet Little May's"
Hard

Beautiful

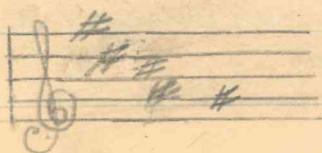
My fourth scale is A. It has three sharps
which are C, F, & C.



My fifth scale is B. It has four sharps
which are F, C, G, & D.



My sixth scale is B. It has five sharps which
are C, D, F, G, & A.



We have two kinds of time $\frac{4}{4}$ or C - common time
and $\frac{3}{4}$ time. These two kinds of time are divided
 $\frac{4}{4}$ divided into $\frac{2}{4}$ $\frac{3}{4}$ is made into $\frac{6}{8}$. There is no
limit to the number of Rhythms -
caused by different number of notes &
rests making rhythm fast or slow.

Half - steps, shortest interval on key board.

Whole - step, interval equalling two half steps.

Chromatic scale, ascends or descends by half steps.

Sharp, indicates that the key one half step higher is to be played.

b Flat indicates " " " " " " " lower " " be played.

Double Sharp indicates that the key one whole step higher is to be played.

bb Double Flat indicates that the key one whole step lower is to be played.

My sixth piece is "The Teddy Bears in Lumberland," by R. L. Grady. It is written in the key of E^P and played in $\frac{4}{4}$ time.

My seventh piece is "Felicia Waltz" by Walter Ralfe. It is written in the key of C and played in $\frac{3}{4}$ time.

My eighth piece is, "The Bell in the Old Church Tower," by Walter Rolfe. It is written in the key of C, and played in $\frac{4}{4}$ time

I played: "Hymn Tune" by Von Weber, and "The Teddy Bear in Shumland" by R. G. Grady during the Communion Service at the Christian Church Oct. 21, 1923
8 yrs. and 1 mo. old. church filled with people.

Practise C scale 4 octs, - both hands.

Play all positions of C chord.

Chords are built on 1st, 3rd, & 5th of scale

Scale C D E F G A B C

1 2 3 4 5 6 7 8

Chord 1 3 5

Then take C Arpeggio, which is Broken Chords in all three positions

C - G - C

E - G - C - E

G - C - E - G

Mrs. Newman and I played a duet,
Little May's Dream, by Edward
M. Read, at a Missionary Meeting
on Nov. 7th, 1923, at Mrs. Percy
Divone, Hominy, Okla

Practice D. scale 4 oct. - both hands.

Scale g a b c d e f# g

Chords g b d g

b d g b

d g b d

D. scale 4 oct. - both hands - Scale d e f#

g a b c# d Chords d f# a d

f# a d f#

a d f# a

F. scale 4 oct. a b c# d e f# g# a

chords a c# e a

c# e a c#

e a c# e

F. scale e f# g# a b c# d# e

chords e g# b e

g# b e g#

b e g[#] b B. scale b c[#] d[#] e f[#] g[#] a[#] b
Chords b d[#] f[#] b
d[#] f[#] b d[#]
f[#] b d[#] f[#]

My ninth piece is "Venetian Dreams" by R. Anthony. It is written in the key of G and played in $\frac{3}{4}$ time.

My tenth piece is "Fairy Polka," by F. S. Lindley. It is written in the key of C and played in $\frac{2}{4}$ time.

My eleventh piece is "Menuet in G" by L. Van Beethoven. It is written in the key of G and played in $\frac{3}{4}$ time.

Beethoven (pronounced like "Bay-to-ven")
Born in year 1770
Died in year 1827

Useful Information.

MULTIPLICATION TABLE.

1	2	3	4	5	6	7	8	9	10	11	12
2	4	6	8	10	12	14	16	18	20	22	24
3	6	9	12	15	18	21	24	27	30	33	36
4	8	12	16	20	24	28	32	36	40	44	48
5	10	15	20	25	30	35	40	45	50	55	60
6	12	18	24	30	36	42	48	54	60	66	72
7	14	21	28	35	42	49	56	63	70	77	84
8	16	24	32	40	48	56	64	72	80	88	96
9	18	27	36	45	54	63	72	81	90	99	108
10	20	30	40	50	60	70	80	90	100	110	120
11	22	33	44	55	66	77	88	99	110	121	132
12	24	36	48	60	72	84	96	108	120	132	144

Table Showing Value of Foreign Money in Dollars, Cents and Mills.

As Established by an Act of Congress, March 3, 1873.

The Pound Sterling of England, Ireland and Scotland, \$4.86.65.

12d. 1s.; 20s. *£. The value of 1d. is 2cts.; 1s. is 24½.

The Franc of France, Belgium and Switzerland, 1.93 cts.

The Reichsmark (Royal-mark) of the German Empire, 23.8 cts.

The Crown of Denmark, Sweden and Norway, 26.8 cts.

The Lira of Italy, and the Peseta of Spain, 19.3 cts.

The Florin of Austria, .41 3.

The Florin of Holland, .40 2.

The Piaster of Turkey, .04 4.

The Dollar of Mexico, .90 9.

The Rouble of Russia, .66 9.

The Milreis of Brazil, .54 5.

The Peso of Cuba, .92 5.

The Dollar of Canada 1.00 0.

*Note.—£, stands for pound Sterling; s, for Shillings; d, for Pence.

Avoirdupois Weight

16 drams (dr.) make 1 oz.

16 oz. " 1 lb.

100 lbs. " 1 cwt.

20 hundredwts " 1 ton.

Troy Weight

24 grains (gr.) make 1 pwt.

20 pennyweights " 1 ounce.

12 ounces " 1 lb.

Apothecaries' Weight

20 grains make 1 scruple.

3 scruples " 1 dram.

8 drams " 1 ounce.

12 ounces " 1 pound

Long Measure

12 inches make 1 foot

3 feet " 1 yard.

6 feet " 1 fathom.

5½ yards " 1 pole or rod.

40 poles " 1 furlong.

8 furlongs " 1 mile.

69 1-6 miles " 1 degree.

320 rods " 1 mile.

Square Measure

144 sq. in. make 1 sq. ft.

9 sq. ft. " 1 sq. yd.

30¼ sq. yds. " 1 sq. pole.

40 sq. poles " 1 rood.

4 roods " 1 acre.

640 acres " 1 sq. mile.

Solid or Cubic Meas.

1728 cus.in. make 1 cu. ft.

27 cu. ft. " 1 cu. yd.

128 cu. ft. " 1 cd. wood.

24¾ cu. ft. " 1 perch stone

Dry Measure

2 pints (pt.) 1 quart.

8 quarts (qt.) 1 peck.

4 pecks (pk.) 1 bushel.

32 bushels (bush.) 1 chaldron.

3 knots in 1 league.

Liquid Measure

4 gills make 1 pt.

2 pints " 1 qt.

4 quarts " 1 gal.

31½ gallons " 1 barrel.

2 bbl. or 63 gal. " 1 hoghead. (hhd.)

Paper Measure

24 sheets (sh.) make 1 quire.

20 quires (qr.) " 1 ream.

10 reams (r.) " 1 bale.

Miscellaneous Denominations

12 units make 1 dozen.

12 doz. " 1 gross.

12 gross " 1 gr. gross.

20 uni- " 1 score.

56 lbs. " 1 firkin of butter.

100 lbs. " 1 quintal of dried salt fish

100 lbs. " 1 cast of raisins

196 lbs. " 1 bbl. of flour.

200 lbs. " 1 bbl. of beef, pork or fish

280 lbs. " 1 bbl. of salt at the N. Y. State Salt Works

32 lbs. " 1 bushel of oats

43 lbs. " 1 bushel barley.

56 lbs. " 1 bushel of corn or rye

60 lbs. " 1 bushel wheat.

A score is 20.

A hand is 4 inches.

A fathom is 6 feet.

A knot is 6086 feet.

3 knots in 1 league.

M. Adreg and row